



IN 2020

Somehow, we made it through this crazy year!

Here's a glimpse at some of our highlights from 2020.

JANUARY



Supporting Girls to Thrive
Baseline Mixed Methods Study

December 2019



for every child

Supporting Girls to Thrive:
Mixed Methods study report
published!

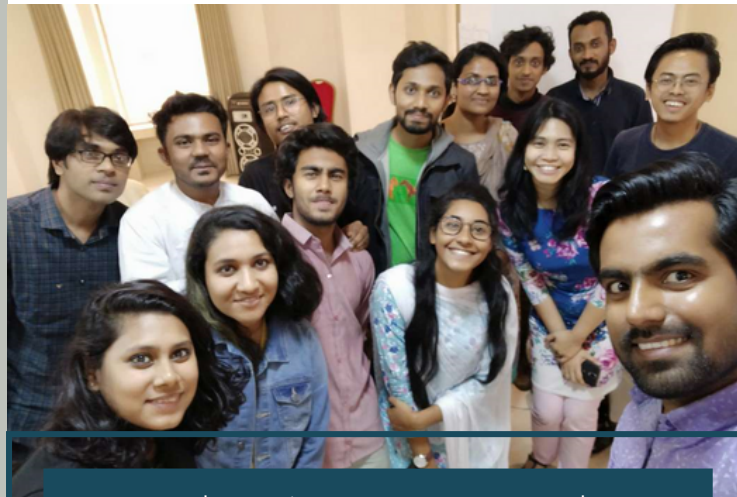


Lena is on board!

FEBRUARY



Structured research fieldwork
in West Java and Nusa Tenggara
Timor for our multi-phase study on
**Maternal & Infant, Young Child
Nutrition (MIYCN)**



Welcoming new Research
Associates in **Bangladesh!**

MARCH



Baseline Survey for our **Post-Disaster Multi-Purpose Cash Assistance** mixed methods study
in East Lombok



Immersion Fieldwork in Bangladesh
for study on **Child Labour**



Welcoming Grace to our team!

APRIL



INCREASING IRON



Workshop for HCD Preparation for
our **Maternal & Infant, Young Child
Nutrition** study

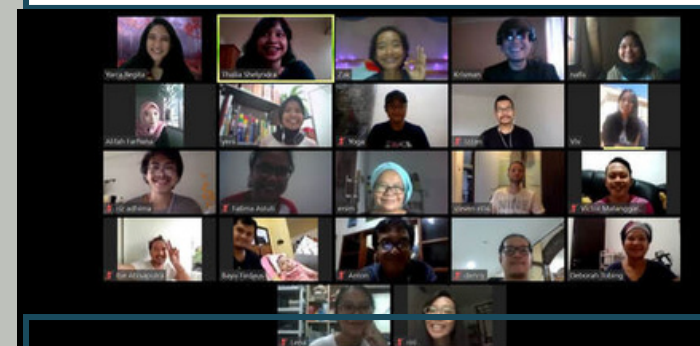


In an ideal world how would
we like to approach this?

What will add pizzazz?

Can we include our mates
(with pizzazz) ?

Internal Training
on developing **Study Designs** for
proposals and projects



Indonesia Team Zoom Party - with
our wider network of Indonesian
researchers



Mid-Year was our time to start learning and adjusting our work to the pandemic situation, including exploring remote research and developing Covid-19 related protocols for fieldwork.

MAY



Our experiences immersing in communities in 15 different districts of Uganda can provide insights into some of the risks and opportunities for COVID-19 response.

COVID-19 Insights Briefs for Indonesia and Uganda: Based on our experiences living with families in Indonesia and Uganda, we compiled some key insights relevant to COVID-19 response and programming

Graphic: Map of Draft Sample of Study Participants



COVID-19 Remote Insights Gathering planning and outreach: Our researchers begin reaching out to previous immersion study families across Indonesia about the impacts of the pandemic on their lives

JUNE



Diary Study

How do we adjust the methods with respect to **technological considerations** (i.e. familiarity with digital platform, network coverage, resource and logistical needs, downloading the data)?

Network Coverage Utilize a variety of data collection methods for diary study (e.g. text, photos, conversations) to find a format feasible for the connection quality and participants' comfort	Network Coverage Would consider voice recording and and photo of manual writing which makes it more possible to the network condition (seriy it when it possible)	Tech Device Spend some time doing a 'get to know you' phone / Whatsapp conversation with each respondent to get a sense of tech behaviours and adjust data collection method accordingly	Tech Behavior Maybe there would be an initial activity that is also part of testing about how well the person understands and is able to do something	Tech Behavior If mom writing diary on paper, could the daughter helping to digitalise and sent it online?
Tech Behaviour For people with low tech literacy level, we can adjust the tools to be 'low-tech' as well. For example, sending a package of books to use for the diary	Tech Device Be flexible on the diary form: can be book, can be notes or sms form on the phone, can be voice note?	Tech Device Need to consider ways to conduct the process in the modest/ the simplest device	Tech Behaviour Some people playing mobile games (mobile legend, COD etc) - putting diary into games narratives might increase engagement	Anything else: Need to consider literacy level and comfort with writing - voice notes could be shared instead of written responses if people prefer. Even routine cases could be converted to 'diary'

Pulse Lab Jakarta x Empatika Learning Network: Brainstorming on Conducting Quality **Remote Qualitative Research**



Frisca joins the team!

JULY



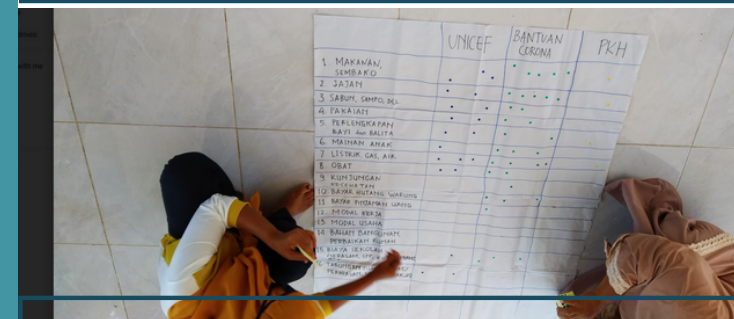
Mini Immersion Training - with Frisca, Panji and Maria

Early Findings Indonesia

Project: Entrepreneurship Ecosystem for Young Women in East Asia and the Pacific
Research Location: Bandung (West Java), East Nusa Tenggara



Conducting **pFGDs** for study on the **Entrepreneurship Ecosystem for Young Women** in West Java and NTT



Conducting **Baseline pFGDs** for our study on **Multi-Purpose Cash Assistance**

AUGUST



Conducting **HCD workshops** in communities for our **Maternal & Infant, Young Child Nutrition** study



Calls with families for stage one of our **Longitudinal COVID-19 Remote Insights Gathering** study: Researchers check-in with families across 20+ districts in Indonesia as we identify themes for exploration in the upcoming three rounds



empatika

IN 2020

We hope for a more free and healthy year in 2021.

Thanks for your support. Let's stick together and stay positive!

SEPTEMBER

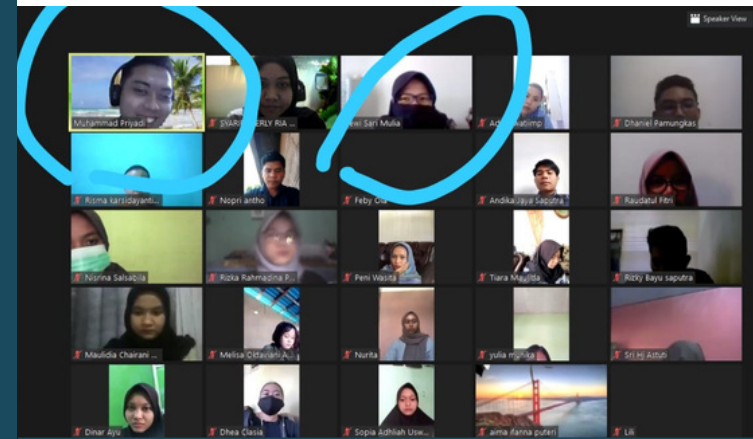


Endline Survey for our **Multi-Purpose Cash Assistance** study



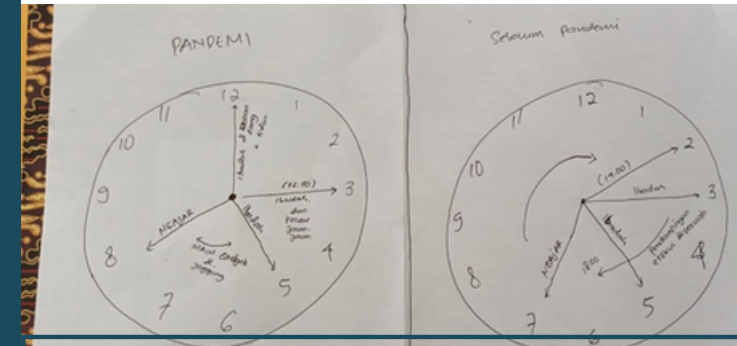
Conducting **Endline pFGDs** for our **Multi-Purpose Cash Assistance** study in East Lombok

OCTOBER



Calls and Interactions with families for Round 1 of our **COVID-19 Remote Insights Gathering**, focusing on **Education and Learning**

NOVEMBER



Interviews and **Digital Journaling** for our study on the **Digital Learning Landscape** in Indonesia

What we learned?

Their own message was the fences "prevent our child getting sick often"

Their OWN, SIMPLE message they could EXPLAIN to others



Final Presentations on **HCD lessons learned** for our study on **Maternal & Infant, and Young Child Nutrition**

DECEMBER



Annual Team Retreat - part in-person, part online, we managed to hold our annual retreat and team reflection!



Calls and Interactions with families for Round 2 of our **COVID-19 Remote Insights Gathering**, focusing on **Health and Hygiene**